



NATA LIGHTING CO.,LTD.
www.nata.cn
Email:info@nata.com
Tel:+86-750-3770000 Fax:+86-750-3771111
Address:380JinOu Road,GaoXin Zone,Jiang Men City,Guangdong,China

NT

Client:

LumCAT: 3-2835-L

Luminaire: 92.70.412.00

Report No: 2024321-B027

Ballast type:

Test No: 2024321-C027

LampCAT: Fortimo_SLM_C_1205

Lamp flux(lm): 2693.0

Number of Lamps: 1

Length(mm): 0

Phm Type: C

Voltage(V):

Current(A):

Power (W): 15.826

PF:

Width(mm): 0

Height(mm): 0

Photometric Results

Lumens(lm): 2281.12, Efficiency(%): 84.71% , Luminous Efficacy(lm/W): 144.14

Central intensity(cd): 3983.539, Maximum intensity(cd): 4000.657

Angle of maximum intensity: C=0.0 γ =4.0

Beam Angle(50%Imax): [C0/180]Total=44.6

[C90/270]Total=44.6

Field angle(10%Imax): [C0/180]Total=67.4

[C90/270]Total=67.4

Maximum s/h(1/2): C0_180=0.73 C90_270=0.73

Maximum s/h(1/4): C0_180=0.69 C90_270=0.69

Up flux rate of lamp(%): 0.00%

Down flux rate of lamp(%): 84.71%

Up flux rate of LUM(%): - -

Down flux rate of LUM(%): 100.00%

CIE Type : Direct lighting

Output flux ratio in π solid angle : 97.715%

$\gamma(^{\circ})$	Average I(cd)	Zonal F(lm)	Sum F(lm)	Eff Flux(%)	Eff Sum(%)
0.0	3983.539	0.000	0	0.00%	0.00%
1.0	3987.343	3.814	3.814	0.14%	0.17%
2.0	3994.073	11.456	15.27	0.43%	0.67%
3.0	3999.633	19.118	34.388	0.71%	1.51%
4.0	4000.657	26.780	61.167	0.99%	2.68%
5.0	3989.757	34.374	95.542	1.28%	4.19%
6.0	3965.763	41.808	137.35	1.55%	6.02%
7.0	3927.650	48.994	186.344	1.82%	8.17%
8.0	3877.540	55.860	242.205	2.07%	10.62%
9.0	3813.019	62.328	304.532	2.31%	13.35%
10.0	3742.207	68.372	372.905	2.54%	16.35%
11.0	3665.030	74.014	446.918	2.75%	19.59%
12.0	3568.249	79.070	525.988	2.94%	23.06%
13.0	3463.493	83.449	609.437	3.10%	26.72%
14.0	3339.206	87.074	696.511	3.23%	30.53%
15.0	3212.213	89.941	786.452	3.34%	34.48%
16.0	3063.419	91.956	878.408	3.41%	38.51%
17.0	2913.089	93.070	971.478	3.46%	42.59%
18.0	2739.790	93.204	1064.682	3.46%	46.67%
19.0	2576.731	92.497	1157.178	3.43%	50.73%
20.0	2398.018	91.052	1248.23	3.38%	54.72%
21.0	2230.351	88.874	1337.104	3.30%	58.62%
22.0	2053.101	86.078	1423.182	3.20%	62.39%
23.0	1877.973	82.485	1505.666	3.06%	66.01%
24.0	1713.963	78.533	1584.199	2.92%	69.45%
25.0	1554.416	74.316	1658.515	2.76%	72.71%
26.0	1353.640	68.645	1727.16	2.55%	75.72%
27.0	1247.970	63.649	1790.809	2.36%	78.51%
28.0	1148.789	60.681	1851.489	2.25%	81.17%
29.0	1009.228	56.460	1907.949	2.10%	83.64%
30.0	878.796	50.976	1958.926	1.89%	85.88%
31.0	741.583	45.093	2004.018	1.67%	87.85%
32.0	608.502	38.678	2042.697	1.44%	89.55%
33.0	483.667	32.176	2074.872	1.19%	90.96%
34.0	368.743	25.796	2100.669	0.96%	92.09%
35.0	273.403	19.943	2120.611	0.74%	92.96%
36.0	219.459	15.693	2136.304	0.58%	93.65%
37.0	146.036	11.920	2148.225	0.44%	94.17%

$\gamma(^{\circ})$	Average I(cd)	Zonal F(lm)	Sum F(lm)	Eff Flux(%)	Eff Sum(%)
38.0	78.384	7.491	2155.716	0.28%	94.50%
39.0	66.218	4.936	2160.651	0.18%	94.72%
40.0	60.534	4.421	2165.072	0.16%	94.91%
41.0	56.343	4.162	2169.234	0.15%	95.10%
42.0	53.029	3.974	2173.207	0.15%	95.27%
43.0	50.600	3.839	2177.046	0.14%	95.44%
44.0	48.566	3.743	2180.789	0.14%	95.60%
45.0	46.467	3.652	2184.441	0.14%	95.76%
46.0	44.433	3.555	2187.996	0.13%	95.92%
47.0	42.553	3.460	2191.456	0.13%	96.07%
48.0	40.732	3.367	2194.823	0.13%	96.22%
49.0	39.239	3.284	2198.107	0.12%	96.36%
50.0	37.959	3.219	2201.325	0.12%	96.50%
51.0	36.635	3.156	2204.481	0.12%	96.64%
52.0	35.282	3.086	2207.567	0.11%	96.78%
53.0	33.826	3.006	2210.573	0.11%	96.91%
54.0	32.326	2.916	2213.489	0.11%	97.04%
55.0	30.644	2.811	2216.3	0.10%	97.16%
56.0	29.247	2.706	2219.006	0.10%	97.28%
57.0	27.930	2.614	2221.621	0.10%	97.39%
58.0	26.774	2.530	2224.15	0.09%	97.50%
59.0	25.713	2.454	2226.604	0.09%	97.61%
60.0	24.704	2.382	2228.986	0.09%	97.71%
61.0	23.819	2.316	2231.302	0.09%	97.82%
62.0	23.051	2.258	2233.56	0.08%	97.92%
63.0	22.436	2.212	2235.772	0.08%	98.01%
64.0	21.770	2.169	2237.942	0.08%	98.11%
65.0	20.841	2.109	2240.05	0.08%	98.20%
66.0	19.773	2.026	2242.077	0.08%	98.29%
67.0	19.012	1.950	2244.027	0.07%	98.37%
68.0	18.713	1.911	2245.938	0.07%	98.46%
69.0	18.588	1.903	2247.841	0.07%	98.54%
70.0	18.508	1.905	2249.746	0.07%	98.62%
71.0	18.486	1.912	2251.658	0.07%	98.71%
72.0	18.383	1.917	2253.575	0.07%	98.79%
73.0	18.281	1.917	2255.492	0.07%	98.88%
74.0	18.149	1.915	2257.408	0.07%	98.96%
75.0	17.879	1.904	2259.311	0.07%	99.04%

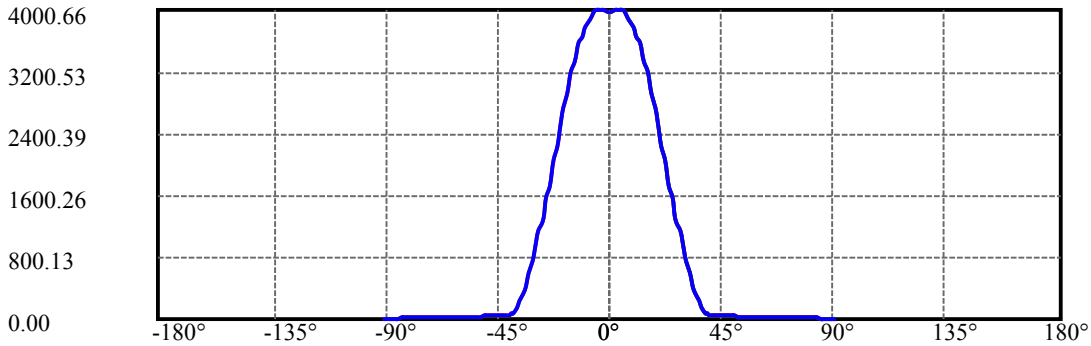
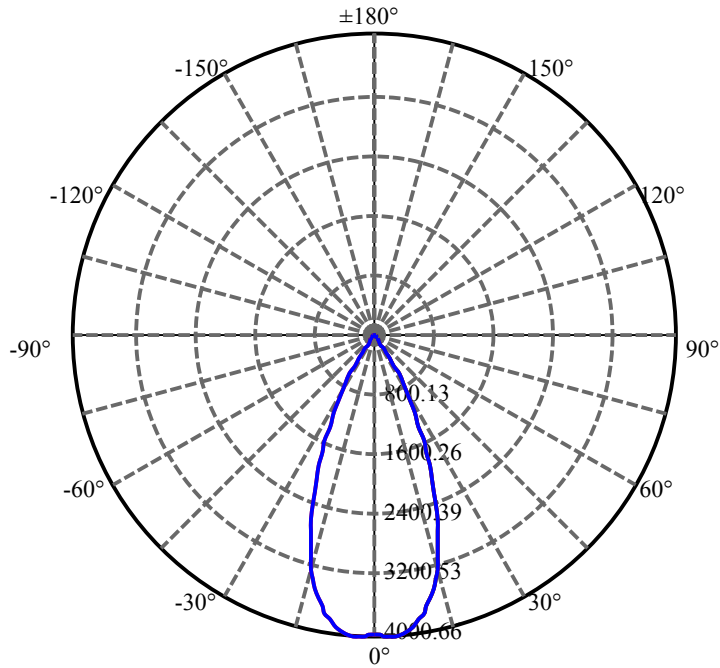
$\gamma(^{\circ})$	Average I(cd)	Zonal F(lm)	Sum F(lm)	Eff Flux(%)	Eff Sum(%)
76.0	17.513	1.879	2261.19	0.07%	99.13%
77.0	17.067	1.844	2263.034	0.07%	99.21%
78.0	16.584	1.801	2264.835	0.07%	99.29%
79.0	16.028	1.752	2266.587	0.07%	99.36%
80.0	15.465	1.698	2268.285	0.06%	99.44%
81.0	14.872	1.641	2269.926	0.06%	99.51%
82.0	14.206	1.577	2271.502	0.06%	99.58%
83.0	13.270	1.494	2272.996	0.06%	99.64%
84.0	11.997	1.376	2274.373	0.05%	99.70%
85.0	10.900	1.250	2275.622	0.05%	99.76%
86.0	10.358	1.162	2276.784	0.04%	99.81%
87.0	10.059	1.117	2277.902	0.04%	99.86%
88.0	9.824	1.089	2278.991	0.04%	99.91%
89.0	9.685	1.069	2280.06	0.04%	99.95%
90.0	9.642	1.060	2281.12	0.04%	100.00%

ZONAL LUMEN SUMMARY

Zone	Lumens	%Lamp	%Fixt
0-30	1958.93	72.74%	85.88%
0-40	2165.07	80.40%	94.91%
0-60	2228.99	82.77%	97.71%
0-90	2280.06	84.67%	99.95%
0-120	2280.06	84.67%	99.95%
0-180	2281.12	84.71%	100.00%
60-90	51.07	1.90%	2.24%
90-120	0.00	0.00%	0.00%
90-130	0.00	0.00%	0.00%
90-150	0.00	0.00%	0.00%
90-180	0.00	0.00%	0.00%
0-27.56	1824.90	67.76%	80.00%

ZONAL LUMEN SUMMARY

0-10	372.90
10-20	875.33
20-30	710.70
30-40	206.15
40-50	36.25
50-60	27.66
60-70	20.76
70-80	18.54
80-90	11.78
90-100	0.00
100-110	0.00
110-120	0.00
120-130	0.00
130-140	0.00
140-150	0.00
150-160	0.00
160-170	0.00
170-180	0.00



C0(Max): —————

C0/C180: —————

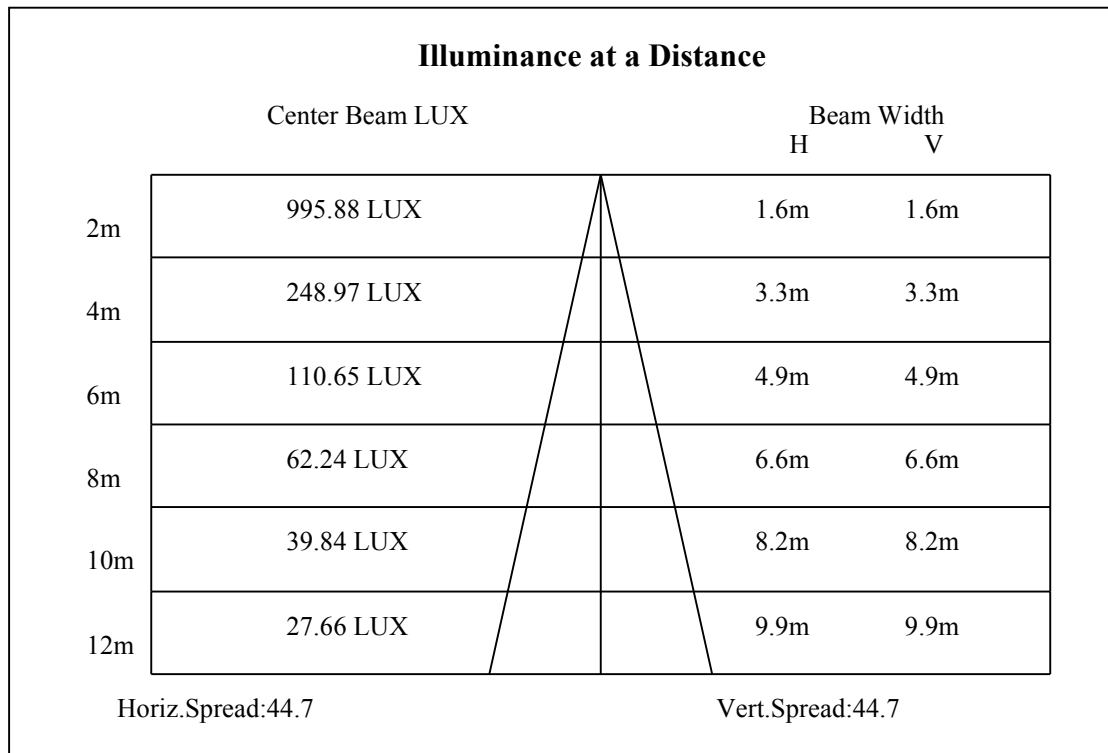
C90/C270: —————

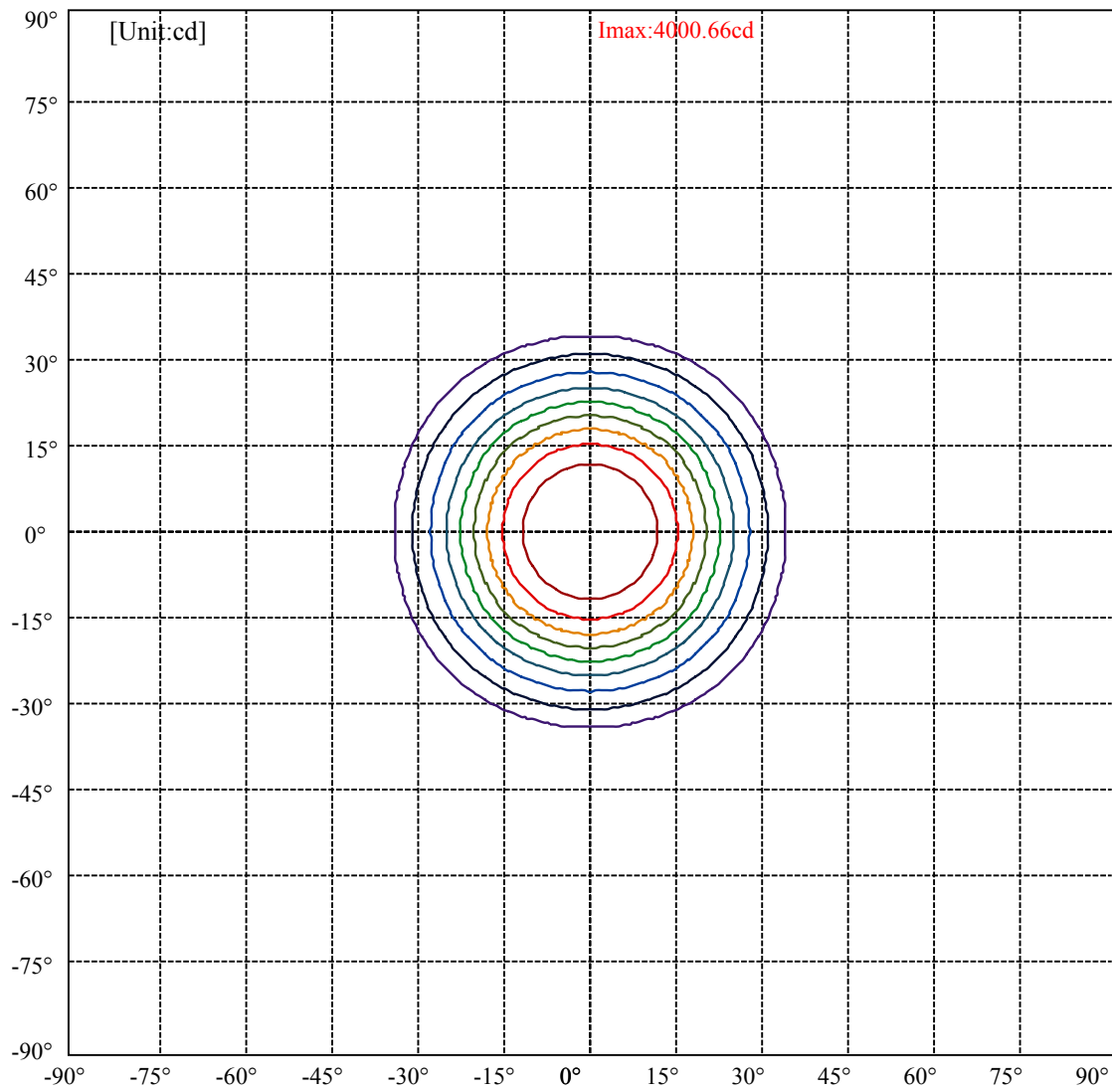
Field angle(10%Imax):C0/180Left:37.7 Right:29.7

:C90/270Left:37.7 Right:29.7

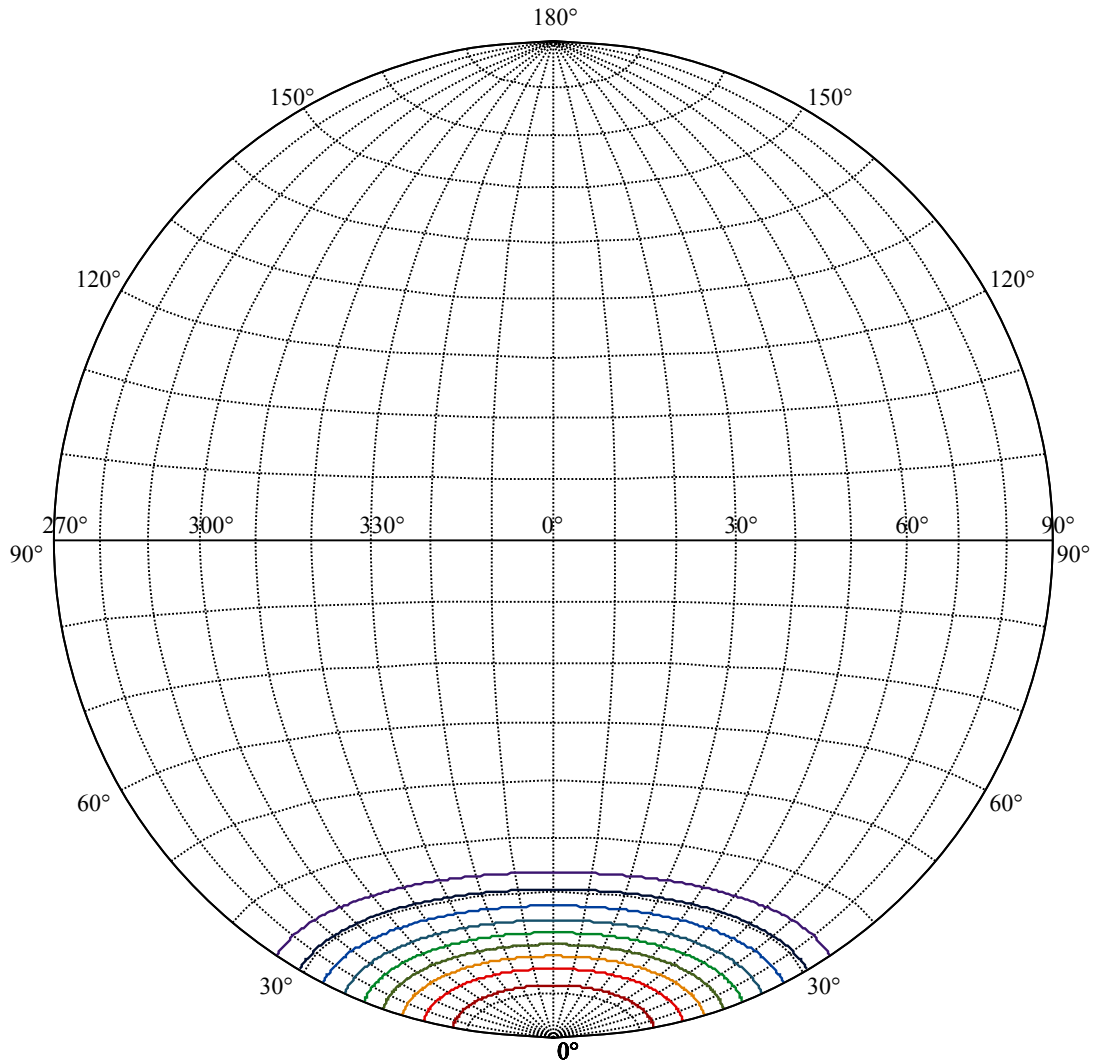
Beam Angle(50%Imax):C0/180Left:26.3 Right:18.3

:C90/270Left:26.3 Right:18.3





- (10%I_{max}) 400.066
- (20%I_{max}) 800.131
- (30%I_{max}) 1200.2
- (40%I_{max}) 1600.26
- (50%I_{max}) 2000.33
- (60%I_{max}) 2400.39
- (70%I_{max}) 2800.46
- (80%I_{max}) 3200.53
- (90%I_{max}) 3600.59



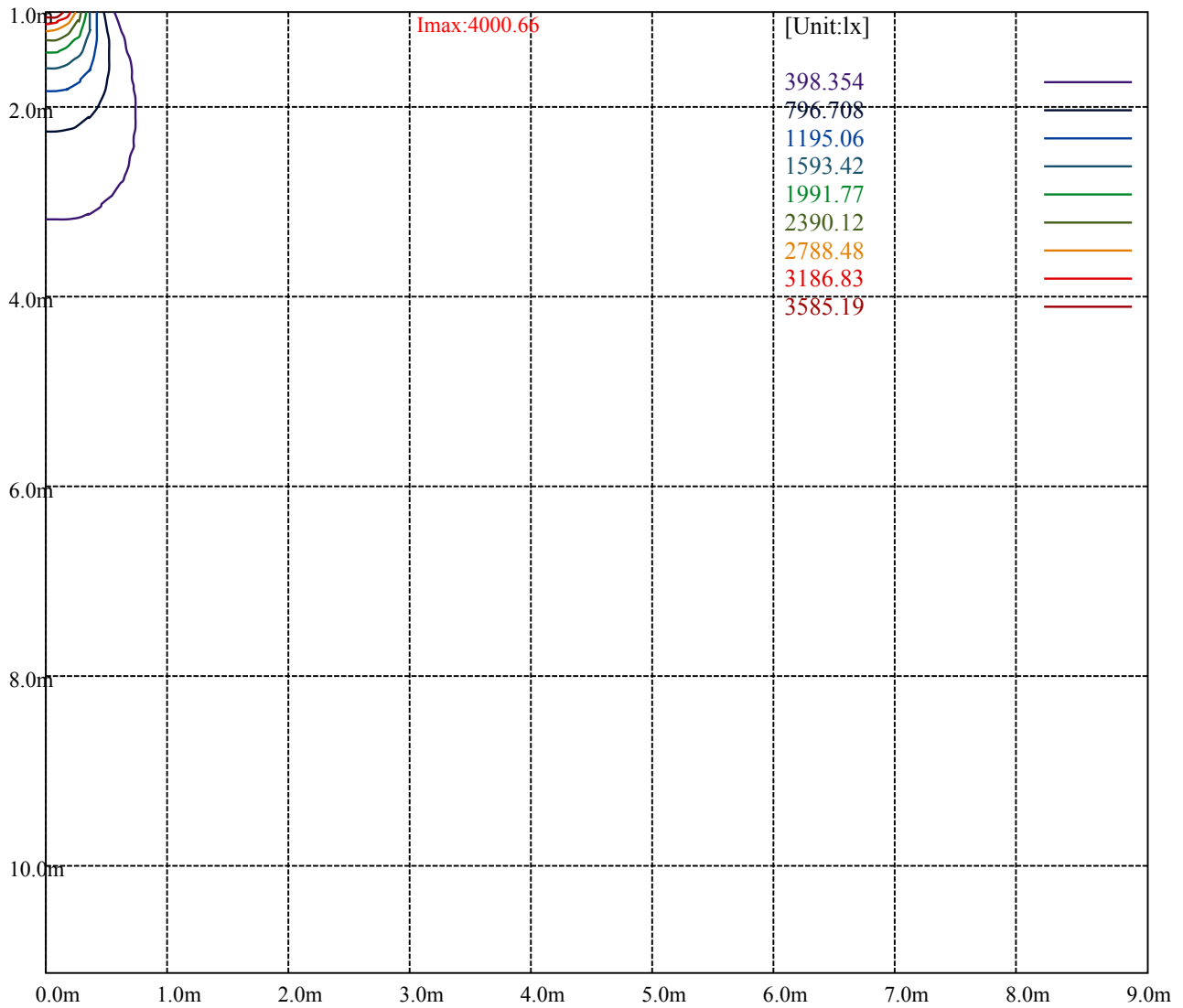
House

[Unit:cd]

Road

Imax:4000.66

(10%Imax)	400.066	—
(20%Imax)	800.131	—
(30%Imax)	1200.2	—
(40%Imax)	1600.26	—
(50%Imax)	2000.33	—
(60%Imax)	2400.39	—
(70%Imax)	2800.46	—
(80%Imax)	3200.53	—
(90%Imax)	3600.59	—



Luminance Table

γ	45	50	55	60	65	70	75	80	85
C0	0	0	0	0	0	0	0	0	0
C45	0	0	0	0	0	0	0	0	0
C90	0	0	0	0	0	0	0	0	0

L(Hor)(65)	L(Ver)(65)	L45(65)	L(Hor)(75)	L(Ver)(75)	L45(75)	L(Hor)(85)	L(Ver)(85)	L45(85)
0	0	0	0	0	0	0	0	0

Glare Table

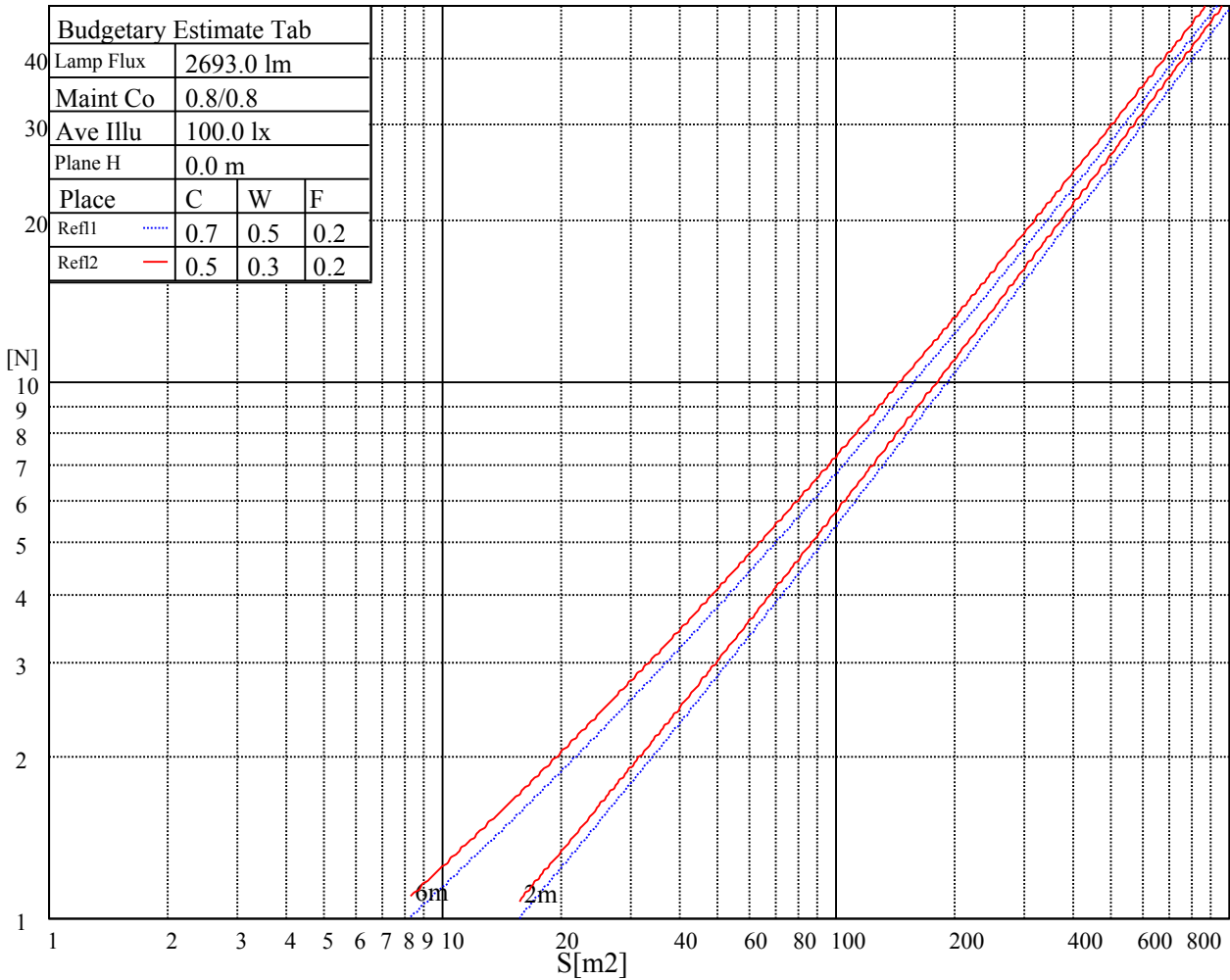
Glare	Quality	Service Values Illuminance(lx)							
1.15	A	2000	1000	500	<=300				
1.5	B		2000	1000	500	<=300			
1.85	C			2000	1000	500	<=300		
2.2	D				2000	1000	500	<=300	
2.55	E					2000	1000	500	<=300
		a	b	c	d	e	f	g	h

Luminance Limiting Curve

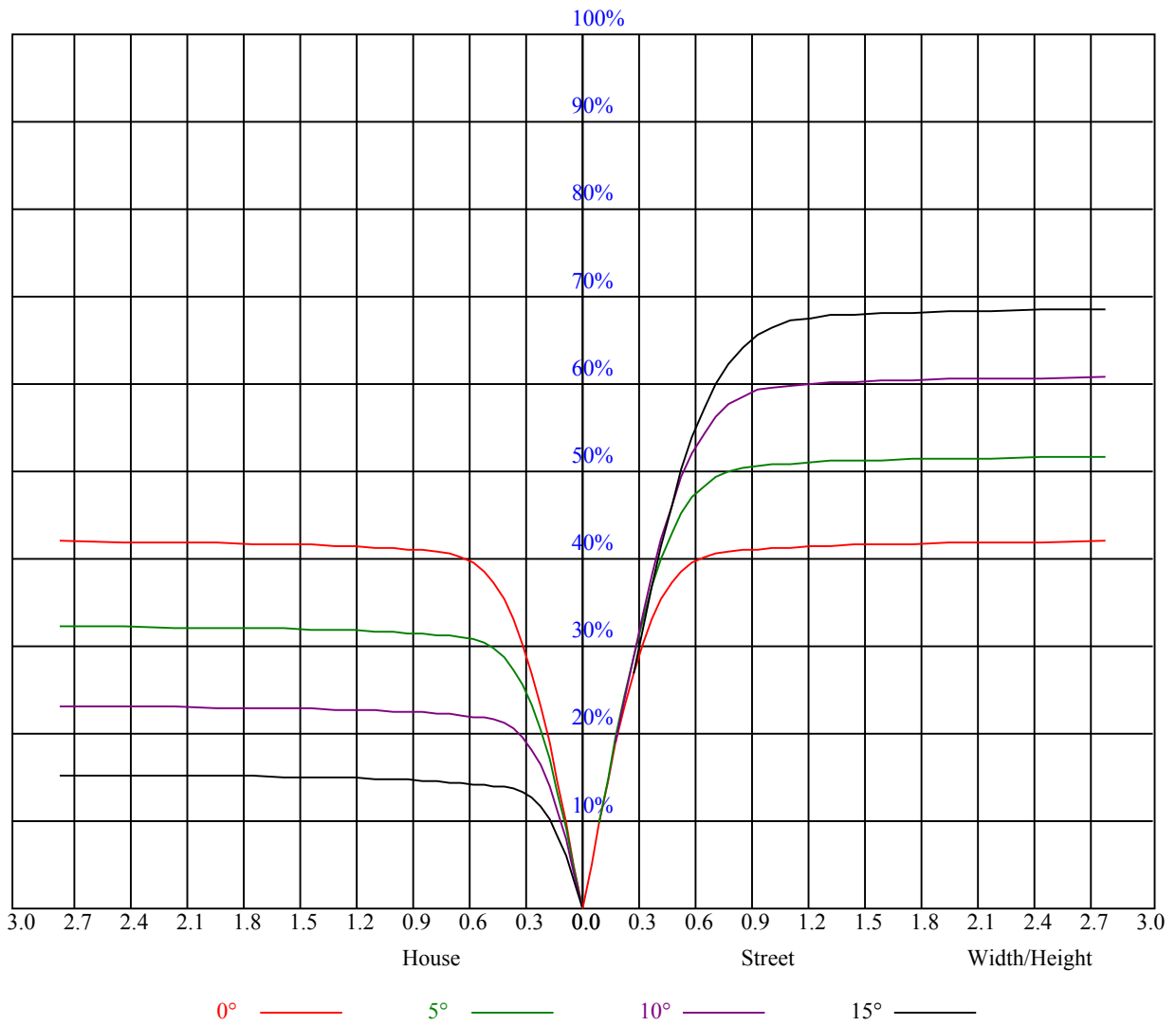


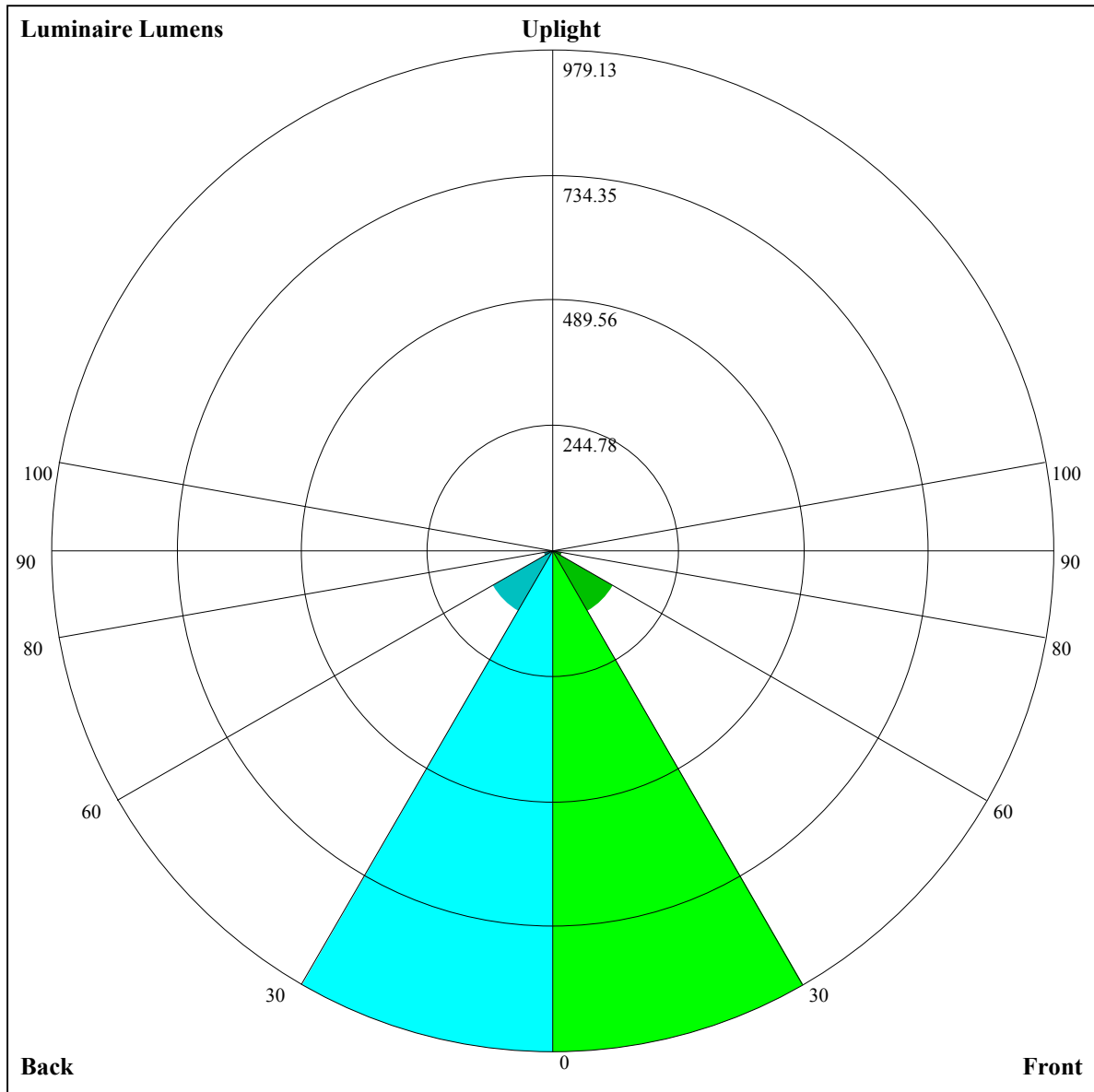
Illumination assessment according UGR											
Rf of Ceiling	70	70	50	50	30	70	70	50	50	30	
Rf of Wall	50	30	50	30	30	50	30	50	30	30	
Rf of Floor	20	20	20	20	20	20	20	20	20	20	
Room dimensions		Viewed crosswise					Viewed endwise				
X	Y										
2H	2H	非数字	非数字	非数字	非数字	非数字	非数字	非数字	非数字	非数字	
	3H	非数字	非数字	非数字	非数字	非数字	非数字	非数字	非数字	非数字	
	4H	非数字	非数字	非数字	非数字	非数字	非数字	非数字	非数字	非数字	
	6H	非数字	非数字	非数字	非数字	非数字	非数字	非数字	非数字	非数字	
	8H	非数字	非数字	非数字	非数字	非数字	非数字	非数字	非数字	非数字	
4H	12H	非数字	非数字	非数字	非数字	非数字	非数字	非数字	非数字	非数字	
	2H	非数字	非数字	非数字	非数字	非数字	非数字	非数字	非数字	非数字	
	3H	非数字	非数字	非数字	非数字	非数字	非数字	非数字	非数字	非数字	
	4H	非数字	非数字	非数字	非数字	非数字	非数字	非数字	非数字	非数字	
	6H	非数字	非数字	非数字	非数字	非数字	非数字	非数字	非数字	非数字	
8H	8H	非数字	非数字	非数字	非数字	非数字	非数字	非数字	非数字	非数字	
	12H	非数字	非数字	非数字	非数字	非数字	非数字	非数字	非数字	非数字	
	4H	非数字	非数字	非数字	非数字	非数字	非数字	非数字	非数字	非数字	
	6H	非数字	非数字	非数字	非数字	非数字	非数字	非数字	非数字	非数字	
	8H	非数字	非数字	非数字	非数字	非数字	非数字	非数字	非数字	非数字	
12H	12H	非数字	非数字	非数字	非数字	非数字	非数字	非数字	非数字	非数字	
	4H	非数字	非数字	非数字	非数字	非数字	非数字	非数字	非数字	非数字	
	6H	非数字	非数字	非数字	非数字	非数字	非数字	非数字	非数字	非数字	
	8H	非数字	非数字	非数字	非数字	非数字	非数字	非数字	非数字	非数字	
Variation with the observer position at spacings:											
S = 1.0H		非数字/非数字					非数字/非数字				
S = 1.5H		非数字/非数字					非数字/非数字				
S = 2.0H		非数字/非数字					非数字/非数字				
Standard tables:		BK0					BK0				
Uncorrected UGR		负无穷大					负无穷大				

UGR calculation is based on CIE Publ. 117 ,S/H = 0.25



RHOCC	80			70			50			30			10			0
RHOW	50	30	10	50	30	10	50	30	10	50	30	10	50	30	10	0
RCR	COEFFICIENTS OF UTILIZATION RHOFC=20 CU															
0	1.01	1.01	1.01	0.98	0.98	0.98	0.94	0.94	0.94	0.90	0.90	0.90	0.86	0.86	0.86	0.85
1	0.94	0.92	0.90	0.92	0.90	0.89	0.89	0.87	0.86	0.86	0.85	0.83	0.83	0.82	0.81	0.80
2	0.88	0.85	0.82	0.87	0.84	0.81	0.84	0.82	0.80	0.82	0.80	0.78	0.79	0.78	0.76	0.75
3	0.83	0.79	0.76	0.82	0.78	0.76	0.80	0.77	0.74	0.78	0.75	0.73	0.76	0.74	0.72	0.71
4	0.79	0.74	0.71	0.78	0.74	0.71	0.76	0.72	0.70	0.74	0.71	0.69	0.73	0.70	0.68	0.67
5	0.74	0.70	0.67	0.74	0.70	0.66	0.72	0.69	0.66	0.71	0.68	0.65	0.70	0.67	0.65	0.64
6	0.71	0.66	0.63	0.70	0.66	0.63	0.69	0.65	0.62	0.68	0.64	0.62	0.67	0.64	0.62	0.60
7	0.67	0.63	0.60	0.67	0.63	0.60	0.66	0.62	0.59	0.65	0.61	0.59	0.64	0.61	0.59	0.58
8	0.64	0.60	0.57	0.64	0.60	0.57	0.63	0.59	0.56	0.62	0.59	0.56	0.61	0.58	0.56	0.55
9	0.61	0.57	0.54	0.61	0.57	0.54	0.60	0.56	0.54	0.60	0.56	0.54	0.59	0.56	0.53	0.52
10	0.59	0.54	0.52	0.58	0.54	0.52	0.58	0.54	0.51	0.57	0.54	0.51	0.57	0.53	0.51	0.50





Luminaire Lumens:

FL=979.13,FM=136.4,FH=19.66,FVH=6.42

BL=979.13,BM=136.4,BH=19.66,BVH=6.42

UL=0,UH=0

BUG Rating:B2-U0-G0

Intensity data(cd)

C/γ(°)	0.0	1.0	2.0	3.0	4.0	5.0	6.0	7.0	8.0
0.0	3983.54	3987.34	3994.07	3999.63	4000.66	3989.76	3965.76	3927.65	3877.54
45.0	3983.54	3987.34	3994.07	3999.63	4000.66	3989.76	3965.76	3927.65	3877.54
90.0	3983.54	3987.34	3994.07	3999.63	4000.66	3989.76	3965.76	3927.65	3877.54
135.0	3983.54	3987.34	3994.07	3999.63	4000.66	3989.76	3965.76	3927.65	3877.54
180.0	3983.54	3987.34	3994.07	3999.63	4000.66	3989.76	3965.76	3927.65	3877.54
225.0	3983.54	3987.34	3994.07	3999.63	4000.66	3989.76	3965.76	3927.65	3877.54
270.0	3983.54	3987.34	3994.07	3999.63	4000.66	3989.76	3965.76	3927.65	3877.54
315.0	3983.54	3987.34	3994.07	3999.63	4000.66	3989.76	3965.76	3927.65	3877.54
360.0	3983.54	3987.34	3994.07	3999.63	4000.66	3989.76	3965.76	3927.65	3877.54
C/γ(°)	9.0	10.0	11.0	12.0	13.0	14.0	15.0	16.0	17.0
0.0	3813.02	3742.21	3665.03	3568.25	3463.49	3339.21	3212.21	3063.42	2913.09
45.0	3813.02	3742.21	3665.03	3568.25	3463.49	3339.21	3212.21	3063.42	2913.09
90.0	3813.02	3742.21	3665.03	3568.25	3463.49	3339.21	3212.21	3063.42	2913.09
135.0	3813.02	3742.21	3665.03	3568.25	3463.49	3339.21	3212.21	3063.42	2913.09
180.0	3813.02	3742.21	3665.03	3568.25	3463.49	3339.21	3212.21	3063.42	2913.09
225.0	3813.02	3742.21	3665.03	3568.25	3463.49	3339.21	3212.21	3063.42	2913.09
270.0	3813.02	3742.21	3665.03	3568.25	3463.49	3339.21	3212.21	3063.42	2913.09
315.0	3813.02	3742.21	3665.03	3568.25	3463.49	3339.21	3212.21	3063.42	2913.09
360.0	3813.02	3742.21	3665.03	3568.25	3463.49	3339.21	3212.21	3063.42	2913.09
C/γ(°)	18.0	19.0	20.0	21.0	22.0	23.0	24.0	25.0	26.0
0.0	2739.79	2576.73	2398.02	2230.35	2053.10	1877.97	1713.96	1554.42	1353.64
45.0	2739.79	2576.73	2398.02	2230.35	2053.10	1877.97	1713.96	1554.42	1353.64
90.0	2739.79	2576.73	2398.02	2230.35	2053.10	1877.97	1713.96	1554.42	1353.64
135.0	2739.79	2576.73	2398.02	2230.35	2053.10	1877.97	1713.96	1554.42	1353.64
180.0	2739.79	2576.73	2398.02	2230.35	2053.10	1877.97	1713.96	1554.42	1353.64
225.0	2739.79	2576.73	2398.02	2230.35	2053.10	1877.97	1713.96	1554.42	1353.64
270.0	2739.79	2576.73	2398.02	2230.35	2053.10	1877.97	1713.96	1554.42	1353.64
315.0	2739.79	2576.73	2398.02	2230.35	2053.10	1877.97	1713.96	1554.42	1353.64
360.0	2739.79	2576.73	2398.02	2230.35	2053.10	1877.97	1713.96	1554.42	1353.64
C/γ(°)	27.0	28.0	29.0	30.0	31.0	32.0	33.0	34.0	35.0
0.0	1247.97	1148.79	1009.23	878.80	741.58	608.50	483.67	368.74	273.40
45.0	1247.97	1148.79	1009.23	878.80	741.58	608.50	483.67	368.74	273.40
90.0	1247.97	1148.79	1009.23	878.80	741.58	608.50	483.67	368.74	273.40
135.0	1247.97	1148.79	1009.23	878.80	741.58	608.50	483.67	368.74	273.40
180.0	1247.97	1148.79	1009.23	878.80	741.58	608.50	483.67	368.74	273.40
225.0	1247.97	1148.79	1009.23	878.80	741.58	608.50	483.67	368.74	273.40
270.0	1247.97	1148.79	1009.23	878.80	741.58	608.50	483.67	368.74	273.40
315.0	1247.97	1148.79	1009.23	878.80	741.58	608.50	483.67	368.74	273.40
360.0	1247.97	1148.79	1009.23	878.80	741.58	608.50	483.67	368.74	273.40
C/γ(°)	36.0	37.0	38.0	39.0	40.0	41.0	42.0	43.0	44.0
0.0	219.46	146.04	78.38	66.22	60.53	56.34	53.03	50.60	48.57
45.0	219.46	146.04	78.38	66.22	60.53	56.34	53.03	50.60	48.57
90.0	219.46	146.04	78.38	66.22	60.53	56.34	53.03	50.60	48.57
135.0	219.46	146.04	78.38	66.22	60.53	56.34	53.03	50.60	48.57
180.0	219.46	146.04	78.38	66.22	60.53	56.34	53.03	50.60	48.57
225.0	219.46	146.04	78.38	66.22	60.53	56.34	53.03	50.60	48.57
270.0	219.46	146.04	78.38	66.22	60.53	56.34	53.03	50.60	48.57
315.0	219.46	146.04	78.38	66.22	60.53	56.34	53.03	50.60	48.57
360.0	219.46	146.04	78.38	66.22	60.53	56.34	53.03	50.60	48.57

Intensity data(cd)

C/γ(°)	45.0	46.0	47.0	48.0	49.0	50.0	51.0	52.0	53.0
0.0	46.47	44.43	42.55	40.73	39.24	37.96	36.64	35.28	33.83
45.0	46.47	44.43	42.55	40.73	39.24	37.96	36.64	35.28	33.83
90.0	46.47	44.43	42.55	40.73	39.24	37.96	36.64	35.28	33.83
135.0	46.47	44.43	42.55	40.73	39.24	37.96	36.64	35.28	33.83
180.0	46.47	44.43	42.55	40.73	39.24	37.96	36.64	35.28	33.83
225.0	46.47	44.43	42.55	40.73	39.24	37.96	36.64	35.28	33.83
270.0	46.47	44.43	42.55	40.73	39.24	37.96	36.64	35.28	33.83
315.0	46.47	44.43	42.55	40.73	39.24	37.96	36.64	35.28	33.83
360.0	46.47	44.43	42.55	40.73	39.24	37.96	36.64	35.28	33.83
C/γ(°)	54.0	55.0	56.0	57.0	58.0	59.0	60.0	61.0	62.0
0.0	32.33	30.64	29.25	27.93	26.77	25.71	24.70	23.82	23.05
45.0	32.33	30.64	29.25	27.93	26.77	25.71	24.70	23.82	23.05
90.0	32.33	30.64	29.25	27.93	26.77	25.71	24.70	23.82	23.05
135.0	32.33	30.64	29.25	27.93	26.77	25.71	24.70	23.82	23.05
180.0	32.33	30.64	29.25	27.93	26.77	25.71	24.70	23.82	23.05
225.0	32.33	30.64	29.25	27.93	26.77	25.71	24.70	23.82	23.05
270.0	32.33	30.64	29.25	27.93	26.77	25.71	24.70	23.82	23.05
315.0	32.33	30.64	29.25	27.93	26.77	25.71	24.70	23.82	23.05
360.0	32.33	30.64	29.25	27.93	26.77	25.71	24.70	23.82	23.05
C/γ(°)	63.0	64.0	65.0	66.0	67.0	68.0	69.0	70.0	71.0
0.0	22.44	21.77	20.84	19.77	19.01	18.71	18.59	18.51	18.49
45.0	22.44	21.77	20.84	19.77	19.01	18.71	18.59	18.51	18.49
90.0	22.44	21.77	20.84	19.77	19.01	18.71	18.59	18.51	18.49
135.0	22.44	21.77	20.84	19.77	19.01	18.71	18.59	18.51	18.49
180.0	22.44	21.77	20.84	19.77	19.01	18.71	18.59	18.51	18.49
225.0	22.44	21.77	20.84	19.77	19.01	18.71	18.59	18.51	18.49
270.0	22.44	21.77	20.84	19.77	19.01	18.71	18.59	18.51	18.49
315.0	22.44	21.77	20.84	19.77	19.01	18.71	18.59	18.51	18.49
360.0	22.44	21.77	20.84	19.77	19.01	18.71	18.59	18.51	18.49
C/γ(°)	72.0	73.0	74.0	75.0	76.0	77.0	78.0	79.0	80.0
0.0	18.38	18.28	18.15	17.88	17.51	17.07	16.58	16.03	15.47
45.0	18.38	18.28	18.15	17.88	17.51	17.07	16.58	16.03	15.47
90.0	18.38	18.28	18.15	17.88	17.51	17.07	16.58	16.03	15.47
135.0	18.38	18.28	18.15	17.88	17.51	17.07	16.58	16.03	15.47
180.0	18.38	18.28	18.15	17.88	17.51	17.07	16.58	16.03	15.47
225.0	18.38	18.28	18.15	17.88	17.51	17.07	16.58	16.03	15.47
270.0	18.38	18.28	18.15	17.88	17.51	17.07	16.58	16.03	15.47
315.0	18.38	18.28	18.15	17.88	17.51	17.07	16.58	16.03	15.47
360.0	18.38	18.28	18.15	17.88	17.51	17.07	16.58	16.03	15.47
C/γ(°)	81.0	82.0	83.0	84.0	85.0	86.0	87.0	88.0	89.0
0.0	14.87	14.21	13.27	12.00	10.90	10.36	10.06	9.82	9.69
45.0	14.87	14.21	13.27	12.00	10.90	10.36	10.06	9.82	9.69
90.0	14.87	14.21	13.27	12.00	10.90	10.36	10.06	9.82	9.69
135.0	14.87	14.21	13.27	12.00	10.90	10.36	10.06	9.82	9.69
180.0	14.87	14.21	13.27	12.00	10.90	10.36	10.06	9.82	9.69
225.0	14.87	14.21	13.27	12.00	10.90	10.36	10.06	9.82	9.69
270.0	14.87	14.21	13.27	12.00	10.90	10.36	10.06	9.82	9.69
315.0	14.87	14.21	13.27	12.00	10.90	10.36	10.06	9.82	9.69
360.0	14.87	14.21	13.27	12.00	10.90	10.36	10.06	9.82	9.69

Intensity data(cd)

C/ γ (°)	90.0
0.0	9.64
45.0	9.64
90.0	9.64
135.0	9.64
180.0	9.64
225.0	9.64
270.0	9.64
315.0	9.64
360.0	9.64